

Tutorial: Connecting to the Database Server SQL Server R2

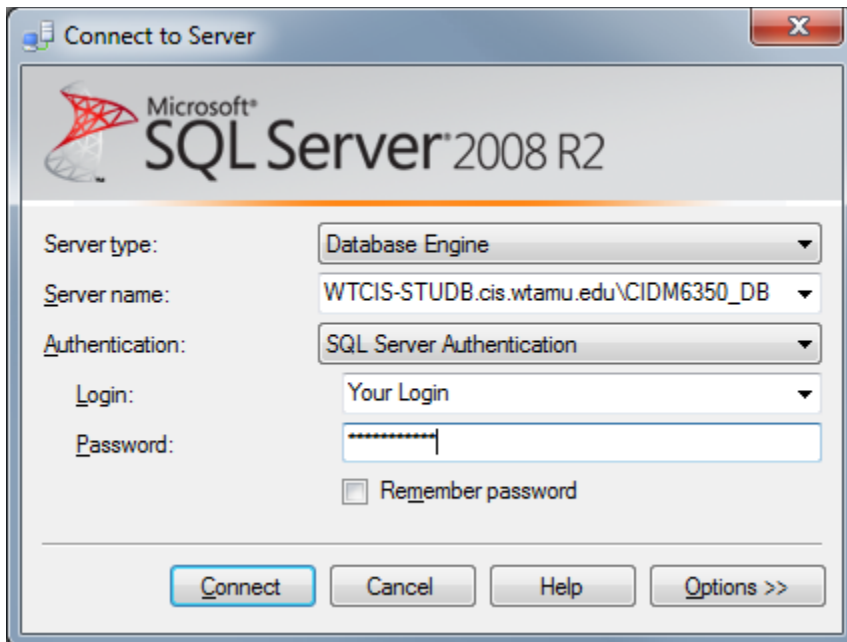
1. To start up SQL Server Management Studio click **Start > All Programs > Database > Microsoft SQL Server 2008 R2 > SQL Server Management Studio**. You should see a screen similar to the one below:



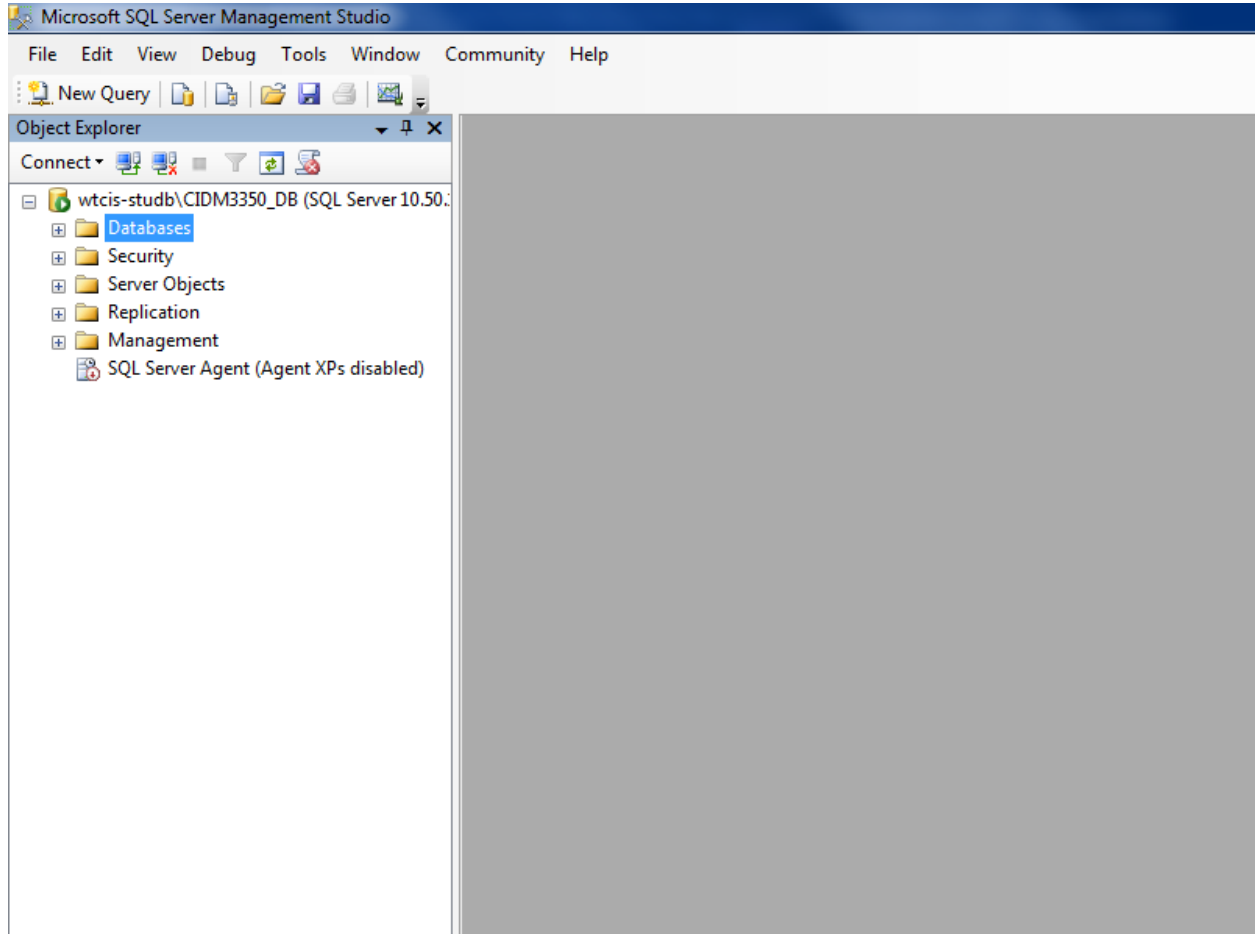
2. To connect to the server:

- a) Select “**Database Engine**” for the **Server Type**.
- b) Type “**WTCIS-STUDB.cis.wtamu.edu\CIDM6350_DB**” for the **Server Name**.
- c) Select “**SQL Server Authentication**” for **Authentication**.
- d) The login is the first part of your student email address e.g. if your student email address is jdoe1@buffs.wtamu.edu then your login is jdoe1.
- e) Password is @CIDM6350!

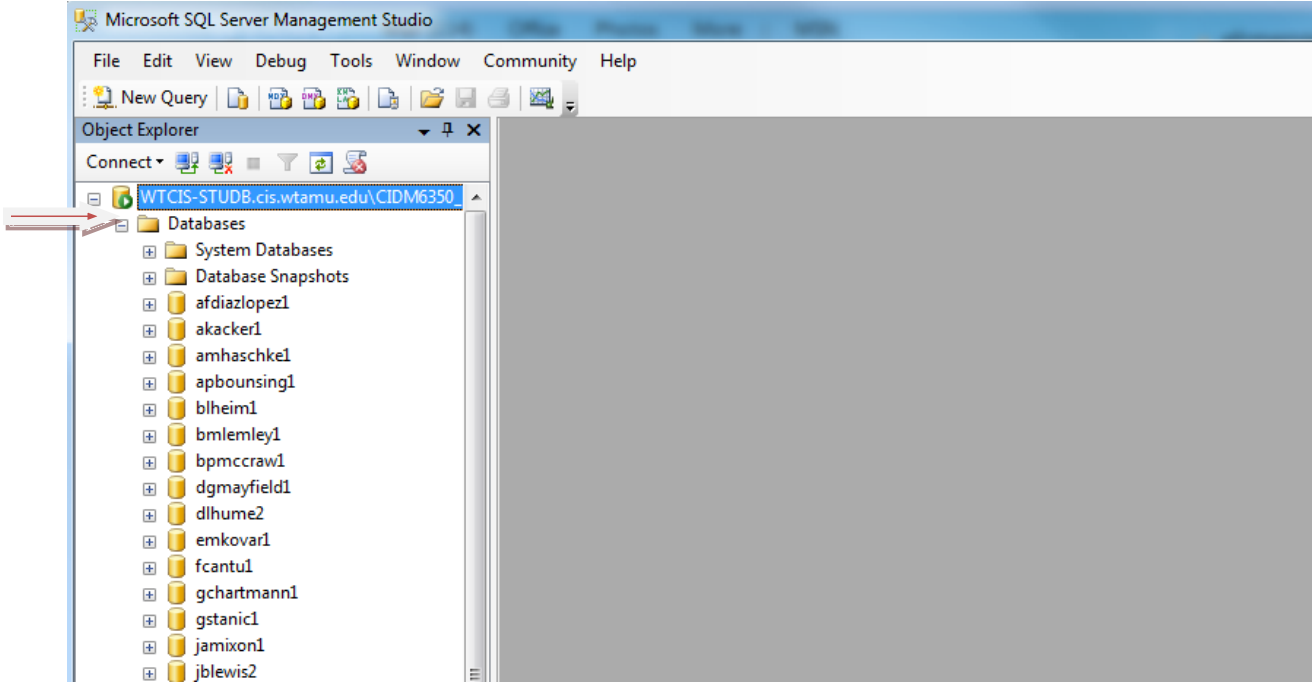
The screen should look similar to the one below but with your login and password:



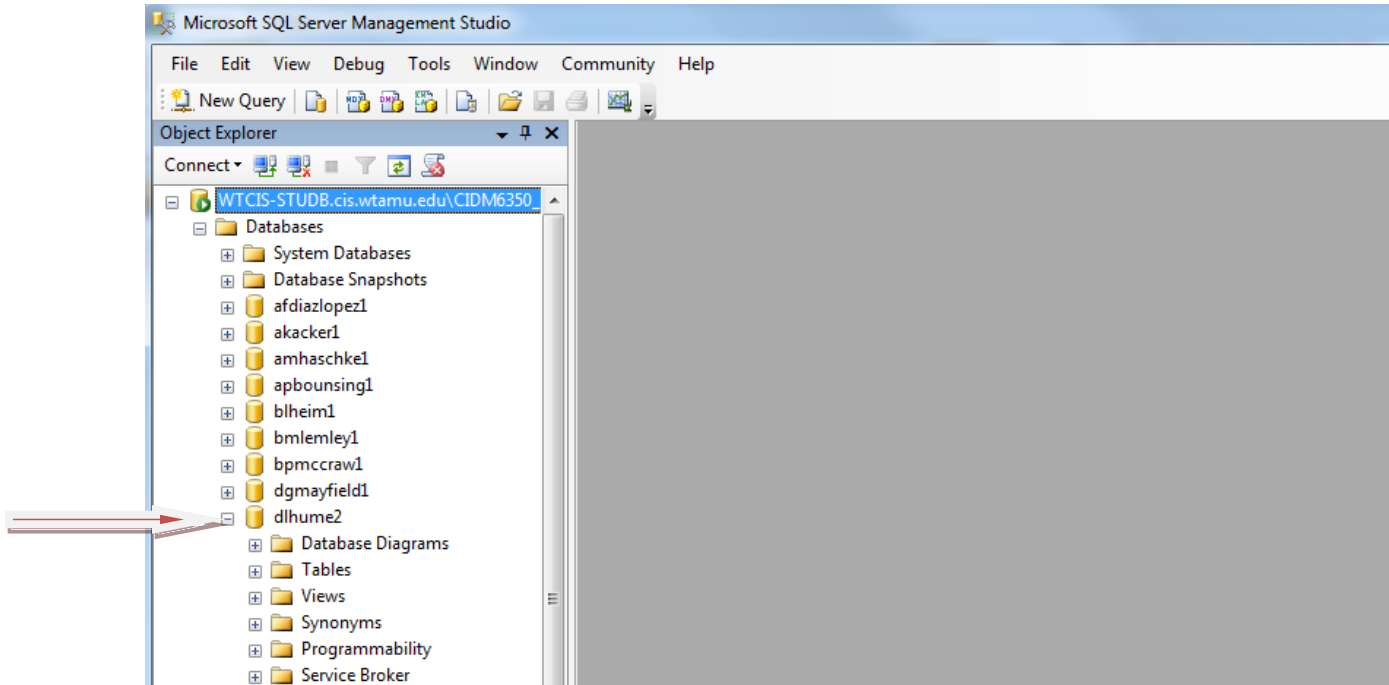
3. Once you are logged in you should see a screen similar to the one below:



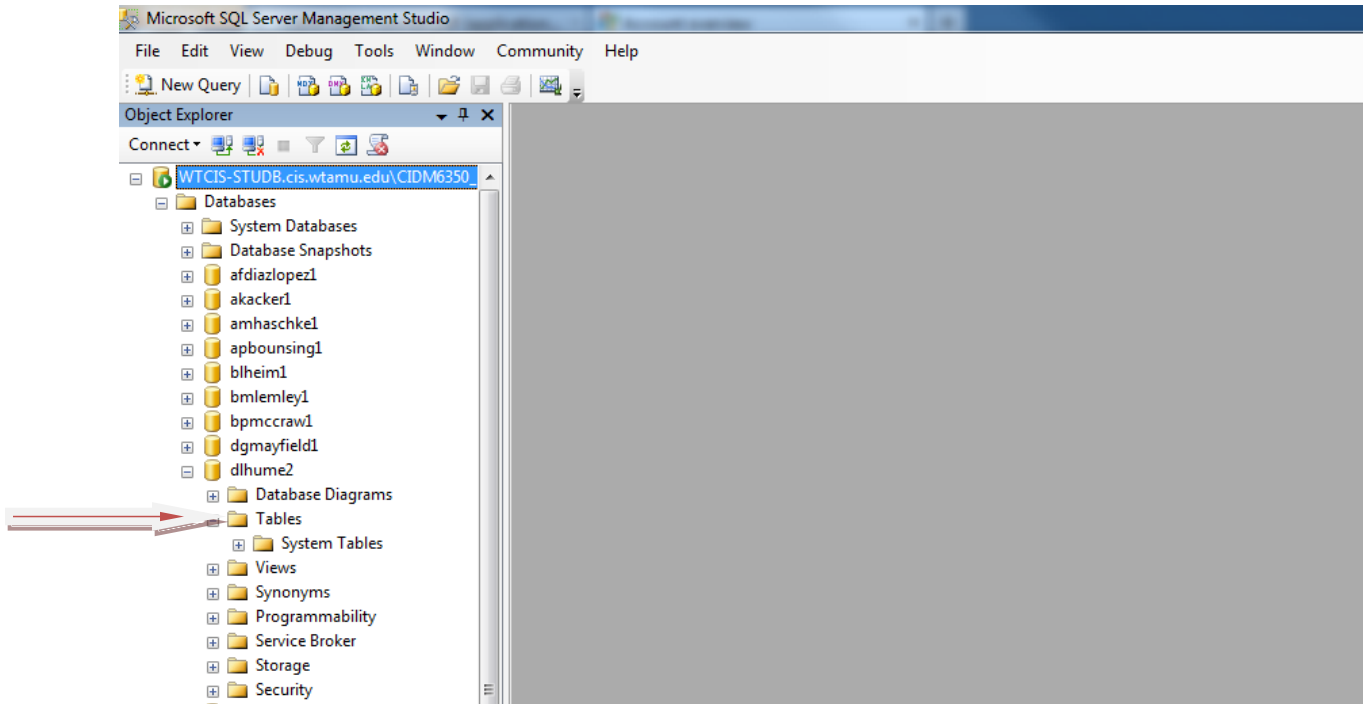
4. Click on Databases and you should see all the available databases.



5. Look for the database with your name and click on the plus sign next to it:

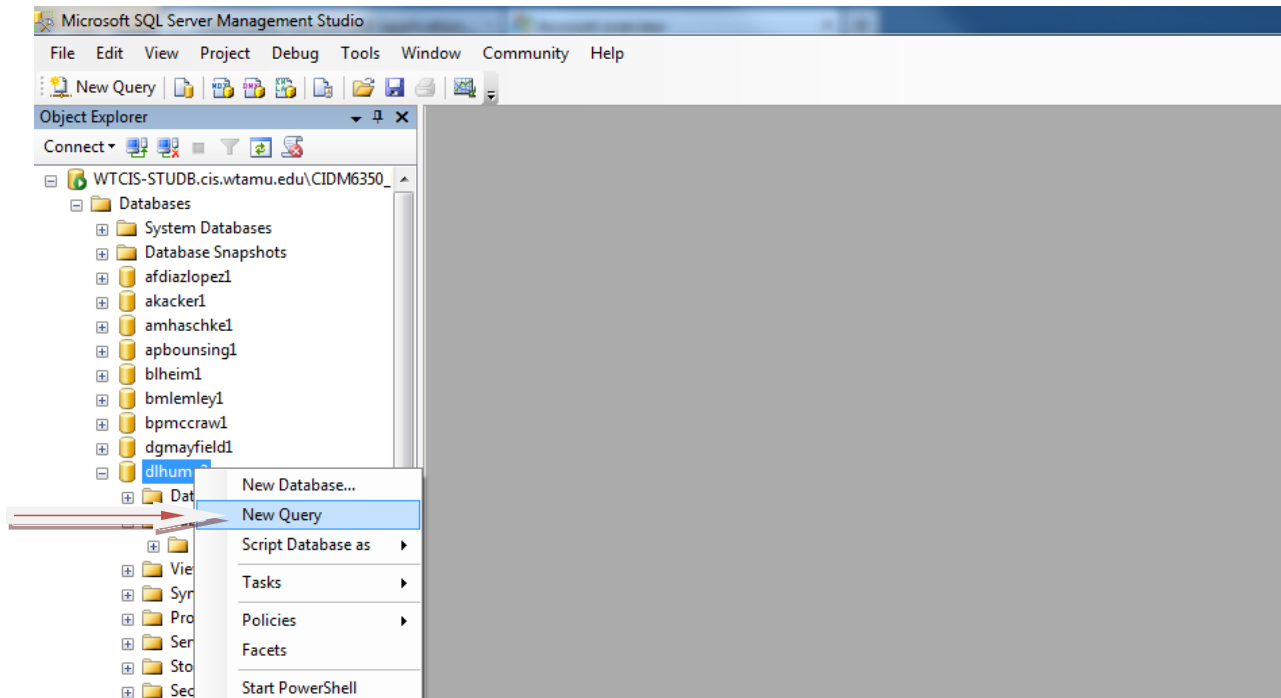


- Click on the plus sign next to "Tables" to view the all the tables you have, at this point you should have non as shown in the picture below:

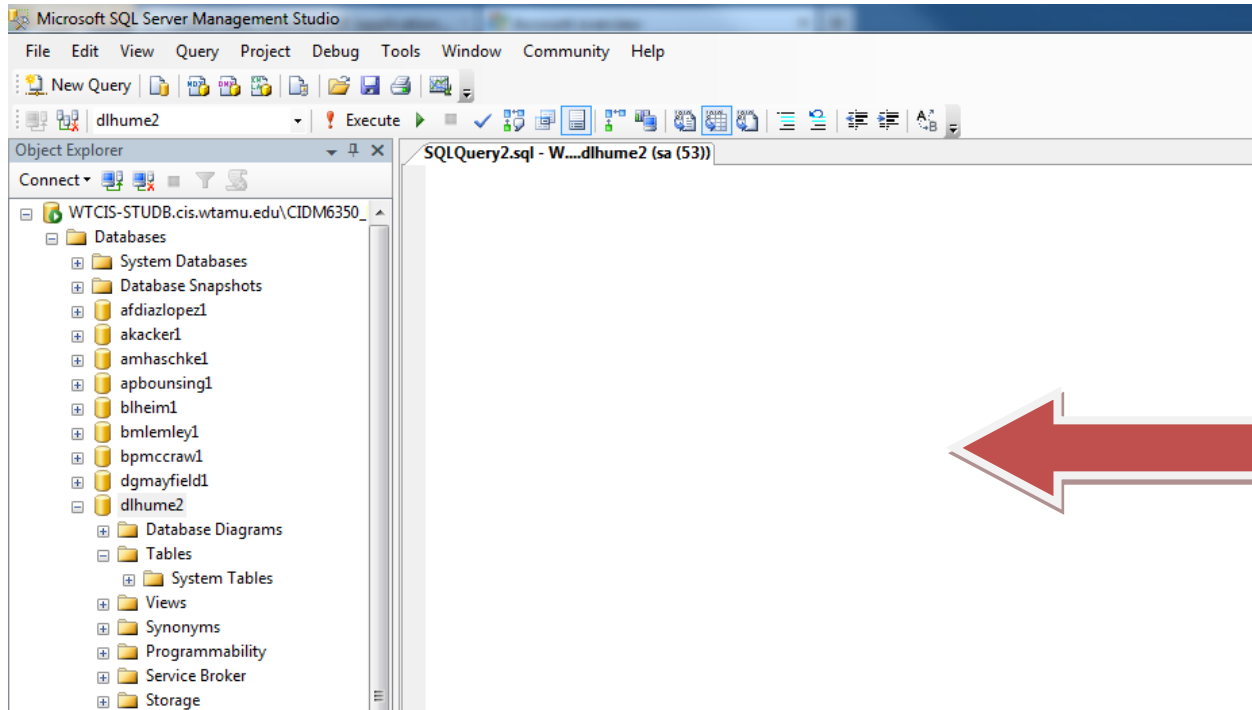


Writing and Executing SQL Commands

1. To execute a query, right click on the schema that has your name on it and select "New Query":



2. You should see a white space in the middle of the screen as shown below:



3. You can type your SQL Commands in this area. To execute a command highlight the command, right click on it and click **!execute**.

